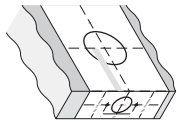


Installation Instructions for Deadbolt

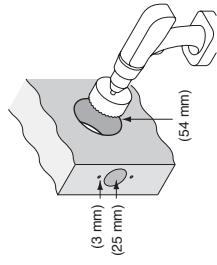
Step 1.

- Mark the Door as shown and use the template as guide.



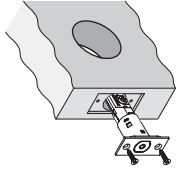
Step 2.

- Drill the holes as shown.



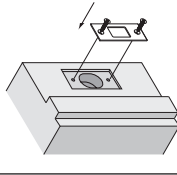
Step 3.

- Prepare rebate
- Install the latch and screw to tighten.



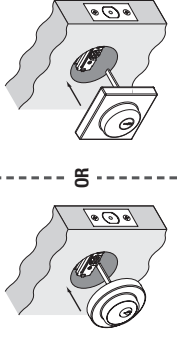
Step 4.

- Prepare rebate
- Install the strike and screw to tighten.



Step 5.

- Install the outside cylinder as shown.
- The drive tail is positioned horizontally.

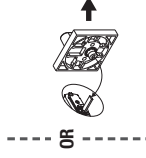


NOTE: Carefully follow these instructions when installing. Screws to be tightened to a recommended 2.5Nm torque.

Step 6.

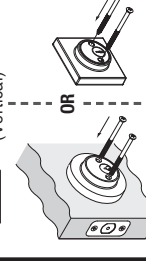
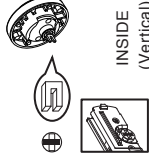
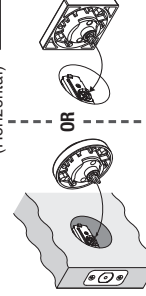
Install Thumbturn

- For Single Cylinder functions, please install the thumbturn as per diagram.



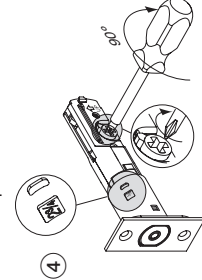
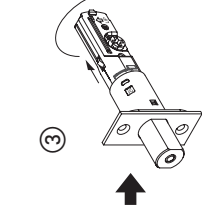
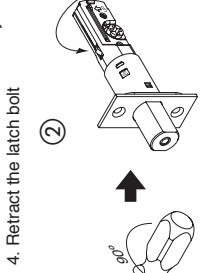
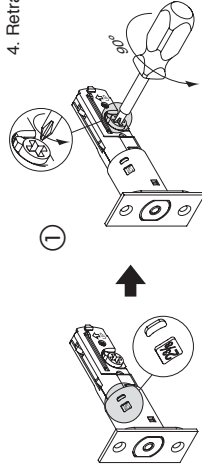
Install Cylinder

- For Double Cylinder functions, install the exterior and internal parts as shown in the diagram.



Step 7.

- Set the latch backset



Note: The latch is supplied set at 60mm (2-3/8"), to set the latch at 70mm (2-3/4"),

1. Extend the latch bolt
2. Rotate the rear of the latch body
3. Pull the rear of the latch body to set at 70mm back set and then rotate to lock into place.
4. Retract the latch bolt



Mark centre-line of latch hole

Mark centre-line of latch hole

FOLD HERE

Fit here on door edge

Fit here on door edge

BACKSET 60mm (2 3/8")

BACKSET 70mm (2 3/4")

54mm hole

Gainsborough
ENTER WITH STYLE™

Installation template
for deadbolt

Gainsborough Hardware Industries Limited,
Melbourne, Australia. A.B.N. 25 004 792 269
www.gainsboroughhardware.com.au

DGA-A00E12-00
JUL '19

